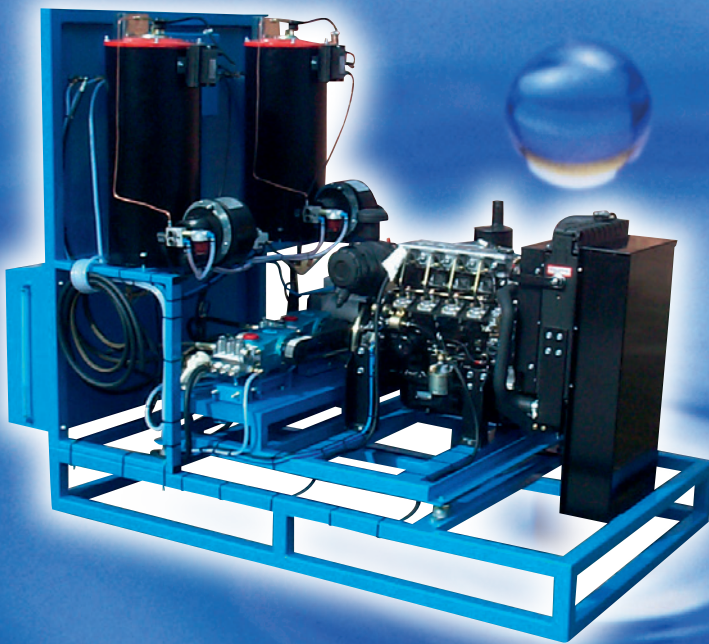


CLEANWELL

HIGH PRESSURE
CLEANING EQUIPMENT

SKID MOUNTED & VAN PACK

HOT & COLD
PRESSURE CLEANERS



- ✔ Performances ranging from 50 bar to 500 bar and 725 psi to 7251 psi. Also available with a variety of flow rates, incorporating any special requirements
- ✔ Available with a variety of engines specifications ranging from 1 cylinder to 4 cylinder water cooled diesel engines or air cooled petrol engines. All complying with EC emissions and noise regulations We offer a variety of engine manufacturers including Yanmar, Isuzu and Honda
- ✔ Consisting of a box section and angle iron main chassis, with a choice of open frame, or with zintec panels coated with an epoxy stove enamelled finish
- ✔ The fuel tank comes complete with triple fuel filter system, low level fuel cut out immobilising engine and sight level gauge
- ✔ High pressure chemical injection complete with metering valve
- ✔ Available in cold water or hot water
- ✔ Improved high efficiency burner also available in stainless steel
- ✔ Control panel – consisting of Key switch; Hour run meter with cold start; Oil pressure warning light with engine immobilizer; Engine water temperature warning light with engine immobilizer
- ✔ Supplied with 15 metre high pressure hose, heavy duty on/off gun, lance & nozzle
- ✔ Designed and manufactured by Cleanwell to comply with CE Legislation
- ✔ 1 Year warranty subject to conditions of sale

British Manufacturer

let Cleanwell handle the pressure